

What are The Tap and Drips Telling Me?



This gives an indication of how much water is flowing through the meter. It ranges from 1 drip to 10 drips:
1 drip = 1-60 litres an hour e.g. a dripping tap or a partly running tap. That's around 15 - 20p per hour.
10 drips = greater than 500 litres an hour e.g. all your taps running fully at the same time. That's around £1.45 per hour.

What are The Fish Telling Me?



Your Water Display will record your water usage during the first week. No fish will appear on the screen during this time. The fish tell you how you're doing compared to your budget. They tell you if you are likely to go over budget (red fish) or under budget (green fish). If you see the clown fish appear, you are 25% under budget.
E.g. at 12 noon on Monday your Water Display will show how much water you have used today. It will compare how much water you used last Monday after 12 noon and then forecast if you are likely to go under or over budget.

What are The Beaker and Puddles Telling Me?



The beaker represents your 'budget' for, say, a day. It will fill up as you use water throughout the day.
Each line is 10% of the budget. If you go over budget the beaker will overflow and the puddles will start to appear.

QUESTIONS & ANSWERS

HOW MUCH POWER DOES YOUR WATER DISPLAY USE?
It costs less than 25p per year to run.

WHO ELSE CAN SEE MY WATER DISPLAY USE?
No-one else will see the data on the Water Display. The information is only available to you.

AN ALERT HAS APPEARED, WHAT SHOULD I DO?
There are two main alerts that may appear on your Water Display:
Leak - you may have a plumbing leak like a dripping tap, cistern or ballcock. If you can't fix it, please call your plumber.
No signal - try moving the Water Display closer to your meter. (See online guide for other alerts).

MY WATER DISPLAY SEEMS TO TURN OFF AT NIGHT, IS IT STILL WORKING?
Your Water Display automatically turns off its backlight at night (10pm – 6am). Don't worry, your Water Display is always on and if you press a button it will light up again.

MONEY SAVING TIPS

If you make small changes to the amount of water you use by 20 litres per day – it's the equivalent of 2 full buckets – not only are you saving water, you are reducing your water and energy bills too.



DROP 25

25% of your energy bill comes from heating hot water. Try filling your bath only two thirds full, instead of to the rim or take a shower instead.



DROP 16

Spend two minutes less in the shower. The average shower uses 8 litres a minute.



DROP 10

Only wash full loads of laundry.



DROP 150

Use a bucket and sponge to wash the car instead of a hose pipe.



DROP 3

Fix a dripping tap.



DROP 200

Install a water butt to collect rainwater for your garden.

SAFETY:

Remember: YOU are responsible for your own safety whilst using the Ensemble Water Display, so take care and follow our safety recommendations.

- It is important to observe some simple safety precautions when using this product. Safe operation of the Ensemble Water Display is impaired if used in a manner not specified by the manufacturer
- Keep the Ensemble Water Display away from water and other liquids. Disconnect from the mains power supply before cleaning (with a soft dry cloth only). Do not immerse in water or other liquids. Please contact Your supplier if any components appear damaged or faulty.
- The Ensemble Water Display is designed to be used in an indoor environment only.
- To protect the environment, this product must be disposed of safely at the end of its life.
- This product complies with RoHS regulations.
- This product is CE approved.

TECHNICAL SPECIFICATIONS

This product is intended to be used indoors in a domestic or small office environment. It is not suitable for outdoor use.

Rated Voltage	230 Vac, 50Hz
Input Power	0.5W
Operational Temperature range	0 to 40°C
Operational Humidity range	85%, non-condensing

Designed and manufactured by: Green Energy Options,
3 St. Mary's Court, Main St, Hardwick, Cambridge CB23 7QS UK

- This unit has been tested and conforms to the following standards:
- EN300 220-1
 - EN301 489-3
 - EN61010-1, EN60950

The CE Declaration of Conformance can be retrieved from <https://www.geotogether.com/cedoc>



Ensemble | water display
QUICK START GUIDE



Helping you understand
how you use water

IN THE PACK

- Your Water Display
- A plug to power your Water Display from the mains



HOW DOES IT WORK?

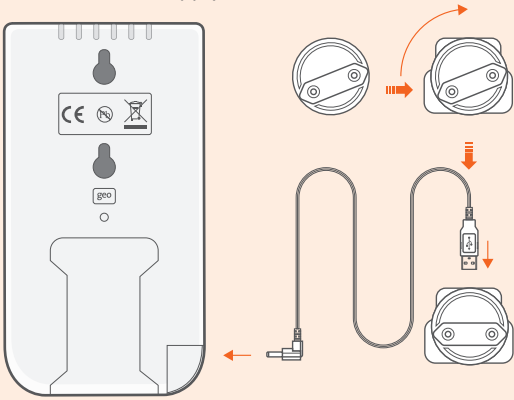
Your Water Display is linked to your water meter. Your Water Display receives messages about your water usage and meter readings several times a minute using wireless communications. This allows the information to be displayed in real time 24 hours a day.

WHAT DOES IT DO?

- Your Water Display will tell you:
- How much water you are using right now.
 - How much your water is costing.
 - Your meter reading.
 - If you are above, or below your configurable target.
 - How your household water use compares with similar households with the same number of occupants.

STEP 1 Power up your Water Display

Insert and twist clockwise to clip the 2 pinned plug to your power supply and connect it to your Water Display. Your Water Display will turn on automatically when you plug it into the mains supply.



STEP 2 Set the Date and Time

Use the left and right buttons to move forward and back in time. Once the display is showing the correct time, use the middle button to confirm. Then move on to complete the same for year, month and day.

Note: If the date and time is already set, you will not need to do this step.



STEP 3 Set the Number of Occupants in your Property

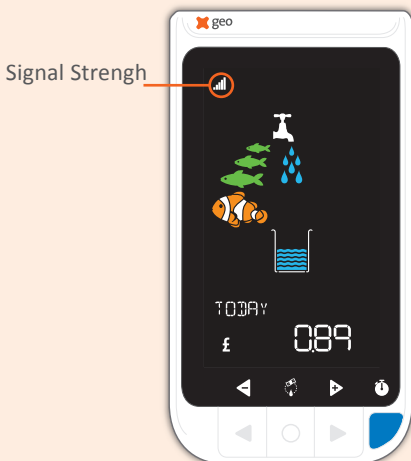
Your Water Display budget assumes a household of 2 average users. The first time you turn on your Water Display, it will ask you to set the number of occupants. Use the left and right buttons to set the number and use the middle button to confirm.

Please look at the guide on our website for instructions on how to set the budget yourself, either by setting an amount in litres or from what you currently pay.

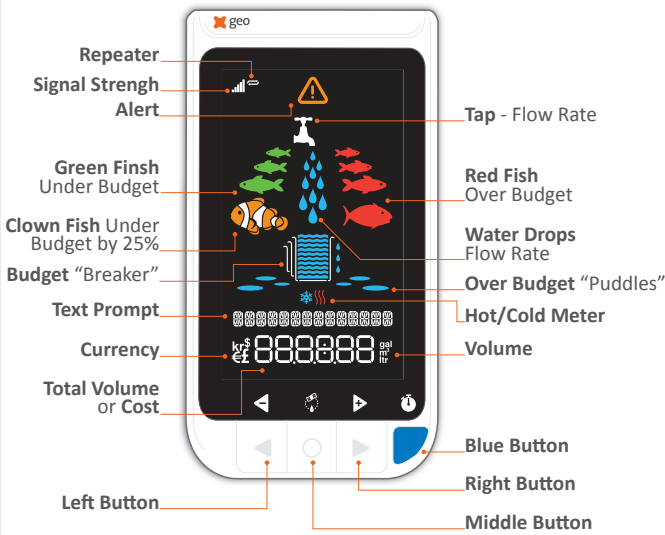


STEP 4 Check the Signal Strength

Your signal strength should be good (two bars are OK). If it is not, try moving your Water Display closer to your water meter.



Display Overview



Left Button: Moves through Today, Yesterday, This week, Last week, This month, Last month.

Note: A week runs from Monday to Sunday and a month is a calendar month.

Middle Button: Pressing will change between cost, volume and meter readings.

Right Button: Moves through the same as left but in reverse

Blue Button: To see how much water one of your appliances uses, try using the stopwatch. Press the blue button for 3 seconds to start/stop the stopwatch.

This will allow you to compare water usage from the different appliances in your house, such as in the shower, compared to the bath.

Note: If your appliance is fed from the header tank there will be a delay while the header tank fills up. i.e. wait until your tank has filled up before pressing the blue button again.